

# Network Management System (NMS)

The Kinematics **Network Management System (NMS)** assists in the collection and storage of event files or continuously transmitted digital data from remote Altus series recorders. While the program is not intended to be a comprehensive solution to every conceivable network configuration, it is highly suitable for use in a number of small to medium sized networks.

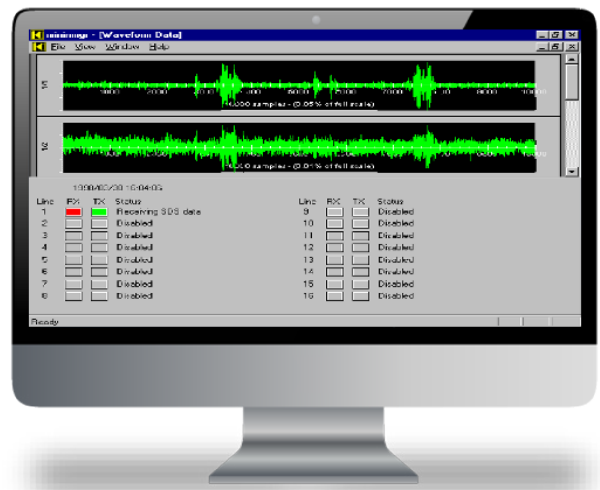
**NMS**, which runs on PC's, supports up to 16 serial ports, and if using modems in event dial-up mode, a configuration of more than 16 recorders is possible. In the "event" modes, **NMS** automatically gathers the data from the recorders and can help manage the storage.

While **NMS** is operating in "streaming data" mode, the software will monitor a small to medium sized network and detect and store the state of the network, much like a large recorder. It can also automatically execute some external software modules to process the data. In addition, the software recovers errors to compensate for bad connections or when one part of the network experiences communications delays.

**NMS** supports the Kinematics Serial Data Streams (SDS) protocol and operates in one of two modes:

1. Takes reports of earthquake events from Altus recorders and automatically gathers the event files (the data) to a PC that is either directly connected or connected through a modem, or
2. Takes continuously transmitted digital data from Altus recorders (maximum of six channels per recorder). It can display the data in real time as it is being collected from the recorders. It can do centralized triggering from the data being transmitted from the recorders, and it stores the information at the local PC.

Managers of small and medium sized networks will find the Kinematics **Network Management System** extremely useful and beneficial.

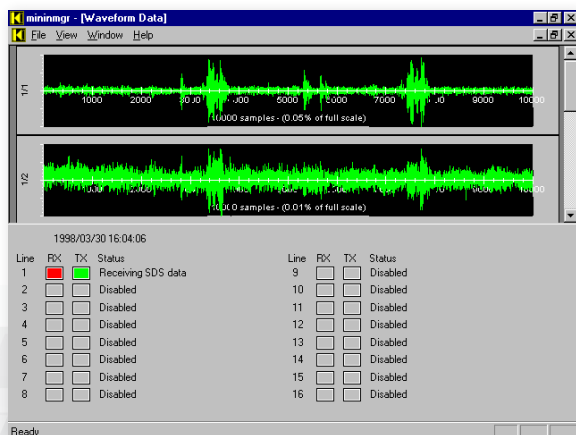


## FEATURES

- Assists in collection and storage of event files, or continuously transmitted data from remote recorders
- Operates in several modes:
  - Direct connect
  - Remote dial-up
  - Remote Real time
- No limit on number of recorders supported in event-driven dial-up mode
- Supports simultaneous communications
- Flexible data storage options
- Performs error recovery to compensate for bad connections or when one part of a network experiences communication delays
- All Altus recorders are supported: K2, Etna, Mt. Whitney
- Supports Kinematics Serial Data Streams protocol

### Cost option

For a seismic data distribution system designed to work in conjunction with the NMS software package, order NMSD. This program allows data from one or more recording stations to be selectively duplicated and distributed over a network connection. It also provides station activity monitoring.



Waveforms are displayed as green traces, with axes displayed in white.